

## PL-9500

Climate and poultry management computer with touchscreen operation

 in touch !

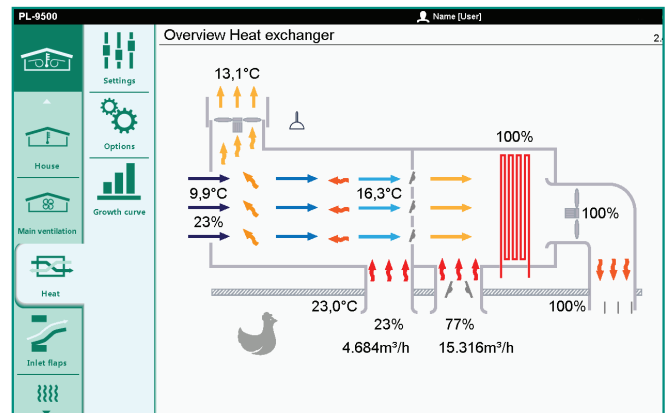
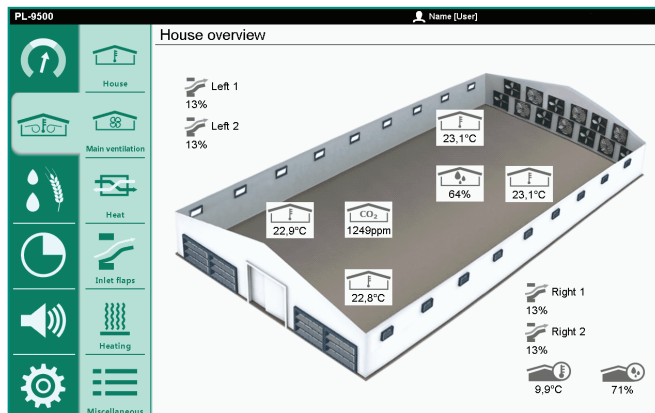
- Suitable for complete automation of any type of poultry house
- Graphic display of all important management information
- Clearly arranged “dashboard” with touch icons for direct navigation
- 3D house overview with measurement values, can be configured to your preference
- With skylight- / daylight control
- Can be programmed in various languages
- USB port for updating and logging
- Secured communication with FarmConnect and **FarmRemote**



## PL-9500: in touch with your livestock!

This super clear and user-friendly climate and management computer with touch screen is designed to be the interactive heart of each type of modern poultry farm. The PL-9500 manages and controls the quality of life of animals in order to achieve optimal performance results.

The climate and management computer collects all data from Stienen systems for life bird weighing, feed weighing, silo weighing, egg counting and heat exchangers and processes the data into comprehensible tables and graphs. The graphical representation of parameters such as temperature, water, feed, weight, production, relative humidity (RH), light, carbon dioxide (CO<sub>2</sub>) and ammonia (NH<sub>3</sub>) provide you all the important management information at a glance. Thanks to the crisp and modern user interface all vital processes in the poultry house can be controlled, monitored and managed easily.



## Summary of configurations

Standard options PL-9500	
Temperature sensors	10
Pulse inputs for counters, measuring fans etc.	5
Inputs 0-10Vdc for RH sensor, pressure sensor, etc.	4
Relay outputs 230Vac/2A	7
Outputs 0-10Vdc	8
Power supply 24Vdc/80mA for 1 AQC-unit	1
Power supply 12Vdc/15mA for measuring fans	1
Error contact 24Vdc/2A	✓

Extension options PL-9500	
Communication via RS-485 PCB	✓
Module bus connections for communication with external modules	3
Connection FN bus	1
General	
Power supply 230Vac - 50/60Hz	
Load 48 VA	
Protection class: IP-54	
Dimensions: 370 x 320 x 160mm	

### FarmRemote (optional)

The remote control feature of the PL-9500 enables you to read the current data of your animal house remotely using your smartphone, tablet or PC. You can even operate the PL-9500 from the comfort of your armchair. The Stienen WEB-SEC interface guarantees a secure connection.



### FarmConnect (optional)

The FarmConnect farm software collects all current and historical data of all control computers on your farm, combines this data, and then presents it in clear overviews, graphs and tables. FarmConnect gives you access to your farm data. Wherever you are, you are always connected to your company so that you can intervene immediately if necessary.

## Stienen BE, Agri Automation

Stienen BE is a leading family company (1977) which has its roots in livestock farming. It is in our nature to be very close to our end users. We are a global supplier of innovative automation solutions for poultry and pig houses. Our climate solutions, automation systems, management software and the accompanying peripheral equipment are all developed and produced in-house.