

---

# Product Brochure



**SKA AVIO 500 Nest System Packages**  
**Designed for HALO/Other Type Polytunnel Buildings**

**House Specification 1 – Up to 265 Birds (170 Organic)**

**House Specification 2 – Up to 500 Birds (340 Organic)**

**House Specification 3 – Up to 780 Birds (510 Organic)**

# LA SYSTEMS

**Release Date: April 2020**

**Release Version: 1**

**Prices Validity: January 2021**

**LUBING**

 **CODAF**

 **LANDMECO**

**Collinson** 

 **SKOV**

 **LSLCO**  
Lighting Systems Limited

 **SUNBIRD**  
POULTRY LIGHTING & AUTOMATION

**HATO**  est. 1974  
agricultural lighting

**Winterwarm**   
heating solutions

 **SKA**

**dol**  
SENSORS

 **Munters**

**STIENEN** 

**MultiHeat** 

 **IPT** **POULTRY HEATING COOLING**



## House Specification 1 – Up to 265 Free Range Birds (170 Organic)

### SKA AVIO 500 Nests

1 x 2.4m long, double sided, galvanized steel, single tier section of SKA AVIO 500 automatic laying nests, to be installed centrally on angle iron at slat level in a polytunnel.

The floors are AstroTurf matting, with holes, on galvanized wire mesh sloping back to central egg collection. Each of the 4 no. 1200mm x 450mm compartments has an internal galvanized rod hinged 'door' which is used to open and close the nests.

The 'doors' can be opened manually via counterweight or automatically by means of 2 x 230v or 24vdc actuator motors and a control panel with a timeswitch for setting the periods for the nests to be opened and closed. Eggs to be conveyed by 500mm wide, perforated polypropylene belts, to the end of the house by a drive unit with hand wheel for manual operation.

Not included – Electricity supply to the nest 'exclusion' motors and slats

### Hanging Nipple Drinkers & Manola Tube Feeders

2 x 10ft long lines of drinker consisting of 2 x aluminium perch tubes and plastic tubes with joiners.

30 x 4022 high flow nipples and single leg cups @ 8in spacing.

Each line includes a pressure regulator, spring breather with 3/4" tap

Each line is to be suspended via Genovese chain hanging supports.

Includes a 90L header tank and plumbing materials to connect tank to drinker pressure regulator.

8 x hanging, plastic 'Manola' tube feeders with metal stems and plastic covers, to provide enough feeding space for up-to 265 birds. Includes hanging cords and cord adjusters.

Not included – Mains water supply to header tank.

Product Description	Price	Unit
<b>Option 1</b> - 1 Section of SKA AVIO 500 Nests - Manual Exclusion	£2,225.00	Per House
<b>Option 2</b> - 1 Section of SKA AVIO 500 Nests - 230V Auto Exclusion	£2,855.00	Per House
<b>Option 3</b> - 1 Section of SKA AVIO 500 Nests - 24VDC Auto Exclusion	£2,825.00	Per House
Hanging Nipple Drinker System & Manola Tube Feeders	£1,070.00	Per House
<b>Option 1 - Manual Exclusion -Total Package Price for 1 House</b>	<b>£3,295.00</b>	<b>Per House</b>
<b>Option 2 - 230V Auto Exclusion - Total Package Price for 1 House</b>	<b>£3,925.00</b>	<b>Per House</b>
<b>Option 3 - 24VDC Auto Exclusion - Total Package Price for 1 House</b>	<b>£3,895.00</b>	<b>Per House</b>

**Terms:**

- a) Prices are subject to LA Systems Terms and Conditions
- b) Prices exclude any and all mechanical, electrical, plumbing and gas installation works
- c) Prices are exclusive of VAT



## House Specification 2 – Up to 500 Free Range Birds (340 Organic)

### SKA AVIO 500 Nests

2 x 2.4m long, double sided, galvanized steel, single tier section of SKA AVIO 500 automatic laying nests, to be installed centrally on angle iron at slat level in a polytunnel.

The floors are AstroTurf matting, with holes, on galvanized wire mesh sloping back to central egg collection. Each of the 8 no. 1200mm x 450mm compartments has an internal galvanized rod hinged ‘door’ which is used to open and close the nests.

The ‘doors’ can be opened manually via counterweight or automatically by means of 2 x 230v or 24vdc actuator motors and a control panel with a timeswitch for setting the periods for the nests to be opened and closed. Eggs to be conveyed by 500mm wide, perforated polypropylene belts, to the end of the house by a drive unit with hand wheel for manual operation.

Not included – Electricity supply to the nest ‘exclusion’ motors and slats

### Hanging Nipple Drinkers & Manola Tube Feeders

2 x 20ft long lines of drinker consisting of 4 x aluminium perch tubes and plastic tubes with joiners.

60 x 4022 high flow nipples and single leg cups @ 8in spacing.

Each line includes a pressure regulator, spring breather with 3/4” tap

Each line is to be suspended via Genovese chain hanging supports.

Includes a 90L header tank and plumbing materials to connect tank to drinker pressure regulator.

15 x hanging, plastic ‘Manola’ tube feeders with metal stems and plastic covers, to provide enough feeding space for up-to 500 birds. Includes hanging cords and cord adjusters.

Not included – Mains water supply to header tank.

Product Description	Price	Unit
<b>Option 1 - 1 Section of SKA AVIO 500 Nests - Manual Exclusion</b>	£2,970.00	Per House
<b>Option 2 - 1 Section of SKA AVIO 500 Nests - 230V Auto Exclusion</b>	£3,599.00	Per House
<b>Option 3 - 1 Section of SKA AVIO 500 Nests- 24VDC Auto Exclusion</b>	£3,570.00	Per House
Hanging Nipple Drinker System & Manola Tube Feeders	£1,265.00	Per House
<b>Option 1 - Manual Exclusion -Total Package Price for 1 House</b>	<b>£4,235.00</b>	<b>Per House</b>
<b>Option 2 - 230V Auto Exclusion - Total Package Price for 1 House</b>	<b>£4,864.00</b>	<b>Per House</b>
<b>Option 3 - 24VDC Auto Exclusion - Total Package Price for 1 House</b>	<b>£4,835.00</b>	<b>Per House</b>

**Terms:**

- a) Prices are subject to LA Systems Terms and Conditions
- b) Prices exclude any and all mechanical, electrical, plumbing and gas installation works
- c) Prices are exclusive of VAT



## House Specification 3 – Up to 780 Free Range Birds (510 Organic)

### SKA AVIO 500 Nests

3 x 2.4m long, double sided, galvanized steel, single tier section of SKA AVIO 500 automatic laying nests, to be installed centrally on angle iron at slat level in a polytunnel.

The floors are AstroTurf matting, with holes, on galvanized wire mesh sloping back to central egg collection. Each of the 12 no. 1200mm x 450mm compartments has an internal galvanized rod hinged 'door' which is used to open and close the nests.

The 'doors' can be opened manually via counterweight or automatically by means of 2 x 230v or 24vdc actuator motors and a control panel with a timeswitch for setting the periods for the nests to be opened and closed. Eggs to be conveyed by 500mm wide, perforated polypropylene belts, to the end of the house by a drive unit with hand wheel for manual operation.

Not included – Electricity supply to the nest 'exclusion' motors and slats

### Hanging Nipple Drinkers & Manola Tube Feeders

2 x 20ft long lines of drinker consisting of 4 x aluminium perch tubes and plastic tubes with joiners.

80 x 4022 high flow nipples and single leg cups @ 6in spacing.

Each line includes a pressure regulator, spring breather with 3/4" tap

Each line is to be suspended via Genovese chain hanging supports.

Includes a 90L header tank and plumbing materials to connect tank to drinker pressure regulator.

22 x hanging, plastic 'Manola' tube feeders with metal stems and plastic covers, to provide enough feeding space for up-to 780 birds. Includes hanging cords and cord adjusters.

Not included – Mains water supply to header tank.

Product Description	Price	Unit
<b>Option 1 - 1 Section of SKA AVIO 500 Nests - Manual Exclusion</b>	£3,665.00	Per House
<b>Option 2 - 1 Section of SKA AVIO 500 Nests - 230V Auto Exclusion</b>	£4,450.00	Per House
<b>Option 3 - 1 Section of SKA AVIO 500 Nests- 24VDC Auto Exclusion</b>	£4,465.00	Per House
Hanging Nipple Drinker System & Manola Tube Feeders	£1,400.00	Per House
<b>Option 1 - Manual Exclusion -Total Package Price for 1 House</b>	<b>£5,065.00</b>	<b>Per House</b>
<b>Option 2 - 230V Auto Exclusion - Total Package Price for 1 House</b>	<b>£5,850.00</b>	<b>Per House</b>
<b>Option 3 - 24VDC Auto Exclusion - Total Package Price for 1 House</b>	<b>£5,865.00</b>	<b>Per House</b>

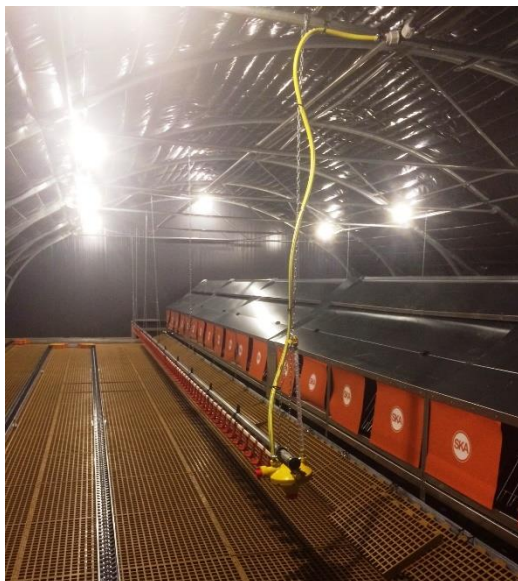
#### Terms:

- a) Prices are subject to LA Systems Terms and Conditions
- b) Prices exclude any and all mechanical, electrical, plumbing and gas installation works
- c) Prices are exclusive of VAT



**LA SYSTEMS**

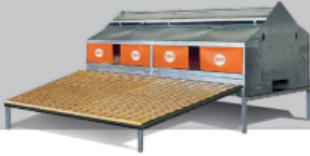
Providing **Comprehensive Solutions** for your **Business**



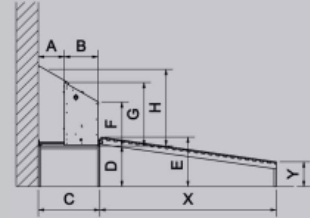
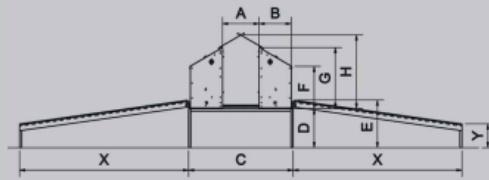


## AVIO 1

NIDI AD 1 PIANO  
1 TIER NESTS  
PONDORS 1 ETAGE



Lunghezza elemento cm 240 - Fori/elemento: 4 (nido centrale), 2 (nido a parete)  
Longueur de l'élément cm 240 - Trous/élément: 4 (pondoir central), 2 (pondoir à paroi)  
Length of one element cm 240 - Hole/element: 4 (central nest), 2 (nest at wall)



	Tipo Type Type	Nastro Belt Tapis	Dimensioni foro Hole dimensions Dimensions du trou	Riproduttori/foro Breeders/hole Reproducteurs/trou	Ovaiole/foro Layers/hole Pondeuses/trou	A	B	C	D	E	F	G	H	X	Y
AVIO	Centrale Double sided Central	30	120x45x35h	48*	64**/45***	32	45,5	123	50-90	62-102	60	86	98	120-420	40-65
	Centrale Double sided Central	50	120x45x35h	48*	64**/45***	52	45,5	143	50-90	62-102	60	86	104	120-420	40-65
	Parete Single sided Paroi	30	120x45x35h	48*	64**/45***	33	45,5	78,5	50-90	62-102	60	86	108	120-420	40-65
AVIO D	Centrale Double sided Central	50	120x55x35h	59*	79**/55***	52	55,5	163	50-90	62-102	62	94	112	120-420	40-65
	Parete Single sided Paroi	30	120x55x35h	59*	79**/55***	33	55,5	88,5	50-90	62-102	62	94	117	120-420	40-65

### Optional Extras

**29302300 – SKA ORION Slat 90cm x 60cm @ £10.95 each**





## LA Systems Terms & conditions of sale

### 1. DEFINITIONS

In these conditions:

- "The Company" means LA Systems Ltd.
- "The Buyer" means the persons, firm or company entering into the contract with the Company.
- "The Conditions" means the conditions herein contained relating to the sale of the goods.
- "The Contract" means the contract between the Company and the Buyer, created upon acceptance of the Buyer's order.
- "The Goods" means the goods supplied hereunder in accordance with the order.
- "The Order" means the order placed by the Buyer, based on the Company's quotation.
- "The Quotation" means the quotation provided by the Company to the Buyer.

### 2. GENERAL

- (a) Quotations for and acceptance of all orders are subject to these conditions and shall govern the contract to the exclusion of all other terms and conditions. The Buyer shall be deemed to have accepted these conditions on placing the order.
- (b) No addition to or variation from these terms and conditions shall have effect unless the same are expressly accepted by the Company in writing under the hand of a director of the Company.
- (c) The conditions represent the entire agreement and understanding of the parties and supersede any prior agreements, representations or undertakings.

### 3. PRICE

- (a) The price for goods will be as provided in the quotation, and confirmed to the Buyer in the Company's invoice.
- (b) The Company reserves the right to vary from the price quoted to the extent that such variation is required to cover increases in the cost of supplying the goods between quotation and delivery to the Buyer. Prices at the date of delivery shall therefore prevail.

### 4. PAYMENT

- (a) Payment shall be made within 30 days following the month of invoice unless otherwise agreed and confirmed to the Buyer in the Company's invoice.
- (b) In the event of late or part-payment, interest at the rate of 5% above the Company's bank base lending rate shall be charged on the sum outstanding on a daily basis until full payment is received.
- (c) All prices quoted are exclusive of VAT, carriage, insurance, packing and all other duties, taxes or levies required to be paid under the contract.

### 5. RESPONSIBILITY OF THE CLIENT

- (a) Provision of any lifting equipment as required for the purpose of offloading on site.
- (b) Provision of a clean and dry store for the safe storage of the equipment prior to and during the installation.
- (c) Provision of a clean continuous electricity supply at 400 V 3 Phase 50Hz
- (d) Provision of a clean continuous water supply.
- (e) *Any taxes and custom / import duties for LA Systems supplied equipment*

### 6. DELIVERY

- (a) The appointment of carriers is at the Company's sole discretion unless the Buyer indicates a specific carrier prior to quotation.
- (b) All reasonable efforts will be made by the Company to fulfil delivery dates provided that reasonable notice of such date is given by the Buyer. Time is not of the essence in the contract.
- (c) The Company will consider repair or replacement of goods damaged or lost in transit where delivery is made by the Company's carrier providing written notice of such damage or loss is provided within 3 days by the Buyer.

### 7. RISK AND PROPERTY

- (a) Risk in the goods passes on delivery.
- (b) Title in the goods will not pass to the Buyer until payment in full of the invoice.
- (c) Where the Buyer sells goods on to a third-party title will pass immediately before the goods are delivered to such third party.
- (d) Where goods are attached to, or incorporated in other goods, or altered, title will not pass by virtue of such attachment or alteration, where the goods can be detached or removed.
- (e) The Buyer is required to store the goods supplied separately from any other goods in its possession until title has passed in accordance with sub-paragraphs (b) and (c) above.
- (f) If the Buyer is overdue in payment for the goods or other goods supplied by the Company, the Company may recover and sell the goods. The Company shall be entitled to take possession of the goods and is hereby granted licence to enter the Buyer's premises for such purpose and may, if necessary, detach or remove the goods from other goods or equipment. This will not effect any other right the Company may have against the Buyer.
- (g) Until payment for the goods and all other goods which are supplied under these conditions:
  - (i) the Buyer shall hold the goods upon trust for the Company.
  - (ii) if the goods are sold the Buyer shall hold the proceeds of sale on trust for the Company in a separate bank account specifically designated for this purpose.
  - (iii) the Buyer reserves the right to trace the proceeds of sale received into any bank or other account which the Buyer maintains.
  - (iv) if the goods are sold the Company may by written demand require an assignment of the Buyer's right to recover the price from any third party.
  - (v) if the Buyer incorporates the goods into, or uses the goods for manufacture of other goods, before payment in full of the price, the Company shall be entitled to take possession of the new goods and is hereby granted a licence to enter the Buyer's premises for the purpose of recovering the new goods. The Company shall be entitled to sell the new goods (subject to any third party rights therein) and shall retain from the proceeds of sale the amount outstanding to the Company for the goods and pay any balance remaining to the Buyer.

### 8. WARRANTY AND LIABILITY

- (a) Subject to the conditions set out below, the Company warrants that the goods will be free from defects in material and workmanship for a period of 12 months from the date of delivery and shall replace any goods which the Buyer proves to the satisfaction of the Company to be faulty in accordance with this condition.
- (b) The warranty given in paragraph (a) is subject to the following conditions:
  - (i) the Company shall be under no liability in respect of any defect in the goods arising from any specification of the Buyer provided in its order or any tender.
  - (ii) the Company shall be under no liability in respect of any defect arising from fair wear and tear, wilful damage, negligence, abnormal working conditions, failure to follow the Company's instructions, misuse or alteration or repair of the goods without the Company's written approval.
  - (iii) the Company shall be under no liability under the above warranty if the total price for the goods has not been paid by the due date for payment.
  - (iv) the above warranty does not extend to parts, materials or equipment not manufactured by the Company, in respect of which the Buyer shall only be entitled to the benefit of any warranty or guarantee provided by the manufacturer thereof to the Company.
  - (v) the Customer warrants the Company that the building is of sound construction and suitable for the fixing or suspension of such equipment to be supplied by the Company. The Company shall not in any way be responsible for any failure of any supplied goods caused by the inadequate age and condition of the building structure.
- (c) Subject as expressly provided in these conditions, all warranties, conditions or other terms implied by statute or common law are expressly excluded to the extent permitted by law.
- (d) Except in respect of death or personal injury caused by the Company's negligence (or implied under the Consumer Safety Act 1987) the Company shall not be liable to the Buyer by reason of any representation, implied warranty, condition or other term or under the express terms of the contract for any consequential loss or damage (whether for loss of profit or otherwise), costs, expenses or other claims for consequential compensation whatsoever arising out of the supply of goods and the Company's liability for direct loss (otherwise than for death or personal injury) shall be limited to the value of the invoice for the contract.

### 9. STORAGE

- The Company shall levy a storage charge to the Buyer for all goods stored by the Company within 1 month of the following:
- (i) the Buyer failing to collect any goods from the Company's premises following written notification of availability for collection;
  - (ii) the Buyer failing to take delivery of the goods or failing to make arrangements for delivery upon written notification of readiness for dispatch.

### 10. RETURNS/CANCELLATION

- (a) The Company will not accept the return of any goods without its prior written consent.
- (b) Where such consent is provided goods shall be returned at the Buyers expense.
- (c) Credit for goods returned will be provided by the Company at the goods resale value, less a handling fee of 20%, provided that the goods are returned in a condition suitable for resale.

### 11. ALTERATIONS/MODIFICATIONS

The Company may make such alterations or modifications as it deems necessary to the goods or their manufacture without notice to the Buyer from time to time.

### 12. NOTICES

All notices to be given under the contract shall be given by prepaid first-class post or facsimile to the registered office or principal place of business of the party to be notified and shall be deemed to have been delivered if by letter at the expiration of 48 hours after posting and if by facsimile on receipt.

### 13. TERMINATION

Without prejudice to any other remedies the Company may have against the Buyer. The Company may terminate the contract on notice to the Buyer, upon the Buyer becoming bankrupt or insolvent or upon a resolution to wind up the Buyer being passed or a receiver, administrative receiver or administrator being appointed and shall be entitled to take possession of all goods supplied and unpaid for, in accordance with paragraph 6 hereof.

### 14. FORCE MAJEURE

The Company shall be entitled to cancel the contract or reduce the quantity of goods to be provided if it is prevented from providing the goods through any circumstances beyond its reasonable control including (but not limited to) industrial action, war, fire or prohibition or enactment of any kind, and will not be liable for any loss or damage incurred whatsoever arising therefrom.

### 15. GOVERNING LAW

The contract shall be governed by English law and subject to the exclusive jurisdiction of the High Court in England.



## LA Systems Ltd Acceptance letter / Order form

Sales representative \_\_\_\_\_

Quotation reference \_\_\_\_\_

I/we would like to confirm our acceptance of the above quotation and instruct LA Systems to carry out the supply and installation of the equipment as set out in their quotation.

I/we accept the enclosed terms and conditions.

I/we agree to pay the total quotation value of £\_\_\_\_\_ plus VAT at the current rate.

I/we agree to the following payment schedule:

50% deposit            £\_\_\_\_\_ plus VAT

50% on delivery      £\_\_\_\_\_ plus VAT

I/we enclose a 50% deposit **including** VAT of £\_\_\_\_\_

Purchase order number (if applicable) \_\_\_\_\_

Contact telephone number \_\_\_\_\_

### **Invoice Address**

### **Delivery Address**

Dated \_\_\_\_\_

Signed \_\_\_\_\_

Print name(s)